



Race 1 – 04/15/17 - Saturday

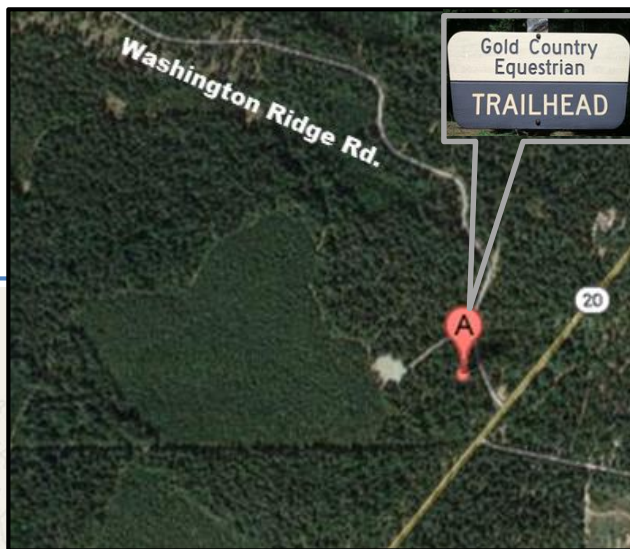
Racers Register at BikeReg.com

(On-Line Reg. Closes Apr 12th 12midnight)

DIRECTIONS

From Bay Area/Davis/Roseville/Sacramento to F.S. Dascombe/Pioneer Trails:

- Take I80 East to HWY49 (Nevada City/Grass Valley) exit.
 - Drive approximately 30 minutes to Grass Valley and continue to Nevada City
 - At HWY 20/49 junction, continue on HWY another 6.7 miles (towards I-80 direction). (Do not turn left on HWY49, it will take you to Downieville.)
 - Corner of HWY20 & Washington Ridge Rd (FS Rd. 20-03) will be signed to turn LEFT.
 - Turn LEFT at Gold Country Equestrian Trailhead, (**look for event sign**).
 - Park as signed, or as directed by parking volunteer.
 - Please follow FS Rules & Regulations, Pack It In/Pack It Out Policy.
 - \$5 Parking Fee (restrooms / wash station rentals).
- Parking in designated parking area per FS permit



BRING WATER !!!

