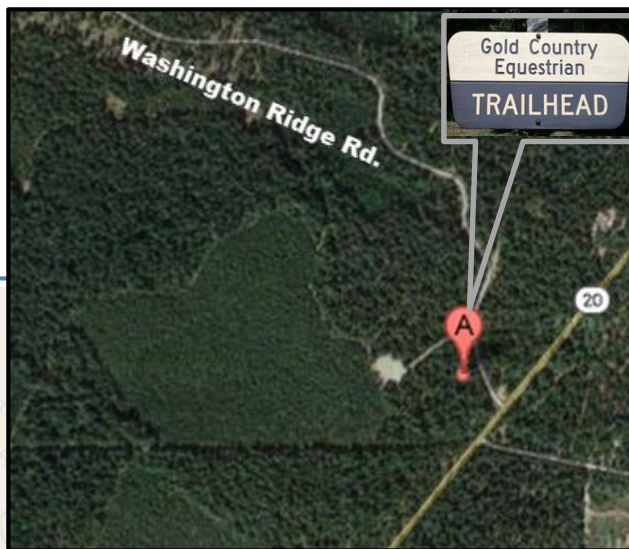


DIRECTIONS FOR Race 5 – 07/07/19 - Sunday

From Roseville/Sacramento to F.S. Dascombe/Hoot/Pioneer Trails:

- Take I80 East to HWY49 (Nevada City/Grass Valley) exit.
- Drive approximately 30 minutes to Grass Valley and continue to Nevada City
- At HWY 20/49 junction, continue on HWY 20 another 6.7 miles (towards I-80 direction). (Do not turn left on HWY49, it will take you to Downieville.)
- Corner of HWY20 & Washington Ridge Rd (FS Rd. 20-03) will be signed to turn LEFT.
- Turn LEFT at Gold Country Equestrian Trailhead, (**look for event sign**).
- Park as signed, or as directed by parking volunteer.
- Please follow FS Rules & Regulations, Pack It In/Pack It Out Policy.
- \$10 Parking Fee (restrooms and wash station, volunteer lunches, etc).



BRING WATER !!!

